

WELCOME

While you are waiting, please help us to prepare for the session by taking these steps:

1. Use your phone to text **NRB888** to **22333**
2. You should receive a confirmation message
3. Be ready...we will ask you to text responses during our presentation 😊

Talent Pipeline Transformation

Aligning a Community for Attainment Results

Presenters

Naomi Boyer, Polk State College
Matt Clark, Broadway Real Estate Services
Kim Long, Polk Vision
Sean Malott, Central Florida Development Council
Pauline Simmons-Brown, College4Everyone Network (LCAN)

What type of organization do you represent



Start the presentation to activate live content

If you see this message in presentation mode, install the add-in or get help at PollEv.com/app

0%

What are the largest industries in your region?



Start the presentation to activate live content

If you see this message in presentation mode, install the add-in or get help at PollEv.com/app

0%

Who are we?

Community Aligned Efforts

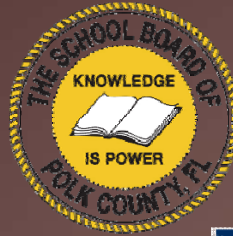
- Central Florida Development Council (CFDC) Education Committee
- Polk Vision Alignment Team
- Co-Chairs
 - Higher Education
 - Industry

Team Composition

- Polk County School District
 - Board Member
 - District Staff
- Charter Districts and Schools
- Non-Profit Agencies
 - College4Everyone
- Post-Secondary Institutions
- CFDC Investors
- Government/Public Service Representatives
- Industry/businesses
- Community Members




Membership




The Case: Why Bother

- Polk County is vested in aligning resources to impact educational credential attainment. The 1% bachelors and higher attainment increase over the last 5 years is not enough to substantively lure prospective businesses to the county.



**organizations in your community that focus
pipeline issues**



Start the presentation to activate live content



If you see this message in presentation mode, install the add-in or get help at PollEv.com/app

Does your LCAN engage the community (business, industry, government, K-12, non-profits, citizens, etc.) in the governance and implementation?

We don't have representation from many of these stakeholders

A few of these stakeholders are represented on leadership team

The backbone organization has opportunities to engage with many of these stakeholders

We align our FCAN resources to the local community efforts including all stakeholders above to achieve maximum success

Start the presentation to activate live content

If you see this message in presentation mode, install the add-in or get help at PollEv.com/app

0%

Educational attainment rates impact....

- Economic Development
- Citizen Quality of Life
- Earning Potential
- Job/Career Resiliency
- None of the Above

All of the Above

Start the presentation to activate live content

If you see this message in presentation mode, install the add-in or get help at PollEv.com/app

0%



**POLK
VISION**

L E A D

LEARN ENGAGE ALIGN DEVELOP

Mission Statement

Polk Vision actively facilitates a process through which Polk County realizes its aspirations and full potential. Polk Vision identifies and builds awareness of community priorities, promotes partnerships and encourages accountability.

Foundational Areas of Focus



Education



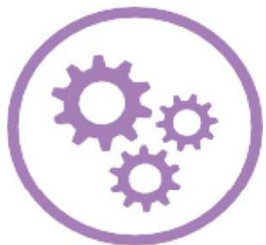
Government



Economic
Development



Quality of Life



Infrastructure



Civic
Engagement

POLK
VISION

**A single organization cannot
solve critical community issues
alone.**

Solutions can be found
by working together
across the entire county
and across all sectors

- **Business**
 - Public
 - Non Profit
 - **Government**



Polk Vision's Principles

Polk Vision strives to:

- Align and engage all stakeholders throughout the county with strategies in six foundational areas of focus: Education, Economic Development, Infrastructure, Government, Quality of Life and Civic Engagement.
- Cultivate an environment of mutual trust and collaboration while working with transparency and a high level of accountability.
- Unify initiatives across the county through a comprehensive, collaborative, multi-faceted process that is recognized as generational; requiring significant time to achieve change and maximum impact



LEARN



ENGAGE



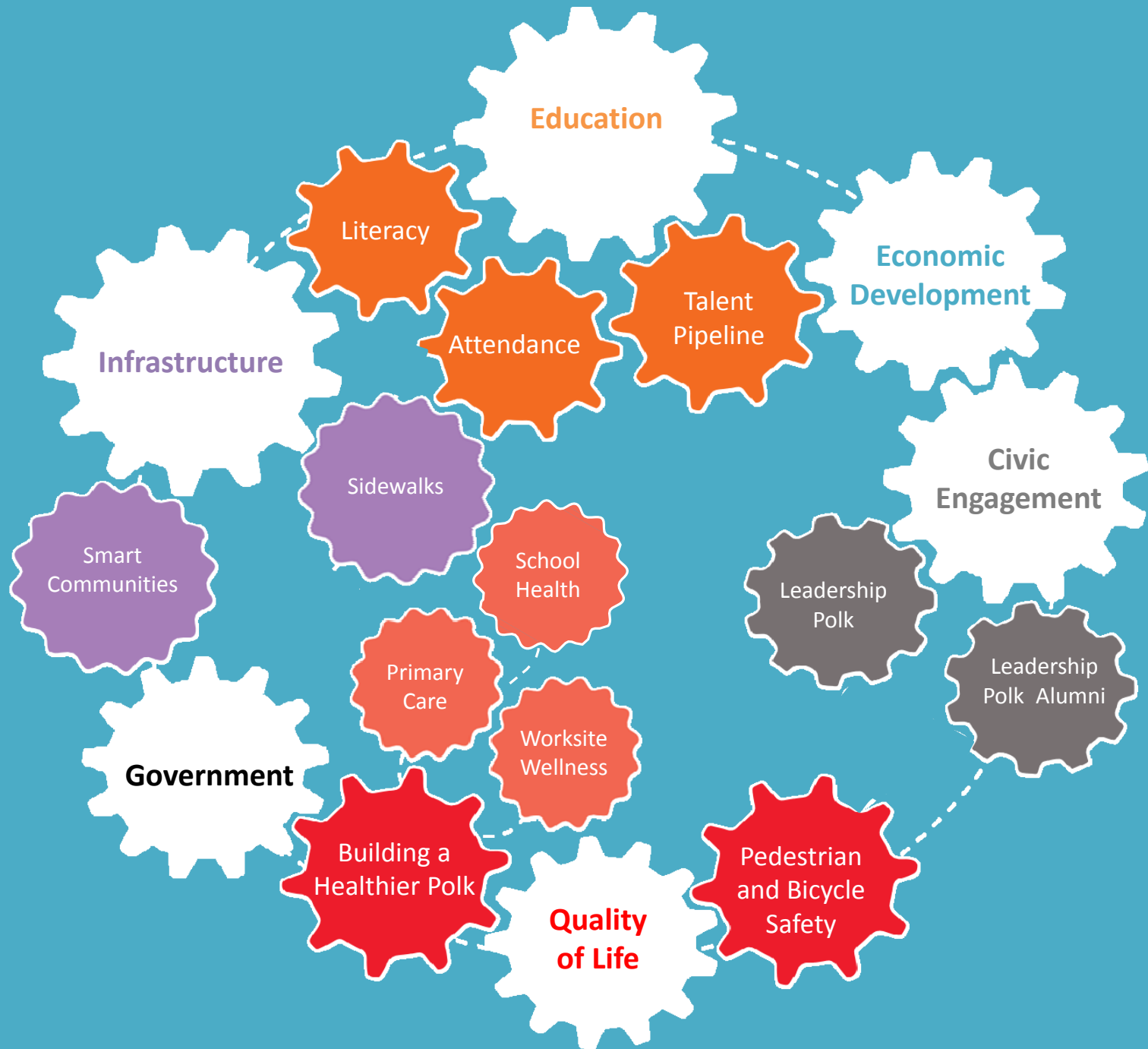
ALIGN



DEVELOP



POLK
VISION





**POLK
VISION**

L E A D

LEARN ENGAGE ALIGN DEVELOP

Central Florida Development Council

Polk County, Florida's Economic Development Partnership

MISSION: Grow an economy based on high-skill, higher-wage sustainable businesses.

VISION: The CFDC is helping develop a community of prosperity where every citizen has the opportunity to earn a higher-level wage.

FOCUS AREAS:

- Promote Polk County as a Premier Business Destination
- Advocate for Key Business Issues
- Facilitate Global Trade
- Foster Collaborative Partnerships

Talent Pipeline Vision

Increase quantity and quality of the talent pool in Polk County by 2030



Tactical Plan

Educational Attainment and Closing the Skills Gap

Post
Secondary/District/School
Partnerships for Services

Bridging School to Work

Marketing Efforts
Planning for Beyond
Graduation & Image Shaping

Community Prosperity
Career and College Readiness

Collegeis4Everyone (C4E) Intersections

Purpose C4E will build upon and coordinate the existing skills, expertise, and resources available within our regional visionary, leadership, and action teams. By working together and integrating efforts, C4E will strengthen, support and promote efforts to increase college access, career preparation and college completion, contributing to talent retention and long-term prosperity of the region.

Collegeis4Everyone (C4E) Intersections

MISSION *To strengthen community partnerships that improve college access, career preparation and college completion in Hardee, Highlands, and Polk counties*

- **Advocate** as a unified regional voice for post-secondary education access, preparation and completion.
- **Collaborate** with community, city, county, regional, state and national stakeholders focused on post secondary education access, preparation, completion and talent retention to impact lives and create a college going culture.
- **Educate** community, city and county stakeholders of the opportunities available to increase college access, career preparation and college completion in the region..

Collegeis4Everyone (C4E) Intersections

Mutually Reinforcing Activities

Coordinating efforts to maximize results.....

FAFSA completion

College and Career Resource Flyer

Guidance Counselors Professional Development

Collegeis4Everyone (C4E) Intersections

Shared Measurement System

Using data to manage progress and measure success

- Agreed Data: What do you care about?
- Find Data: If it doesn't exist decide how to develop
- Present Data : Understandable and Actionable
- Discuss: The data tells the story
- Change:

Discussion and Questions

Naomi Boyer
nboyer@polk.edu
Polk State College
VP/CIO
Strategic Initiatives & Innovation

Matt Clark
mclark@resbroadway.com
Broadway Real Estate Services
President

Kim Long
kim@polkvision.com
Polk Vision
Executive Director

**P
r
e
s
e
n
t
e
r
s**

Sean Malott
sean@cfdc.org
Central Florida
Development Council
President/CEO

Pauline Simmonds-Brown
thehenjourney@gmail.com
Colleges4Everyone
LCAN